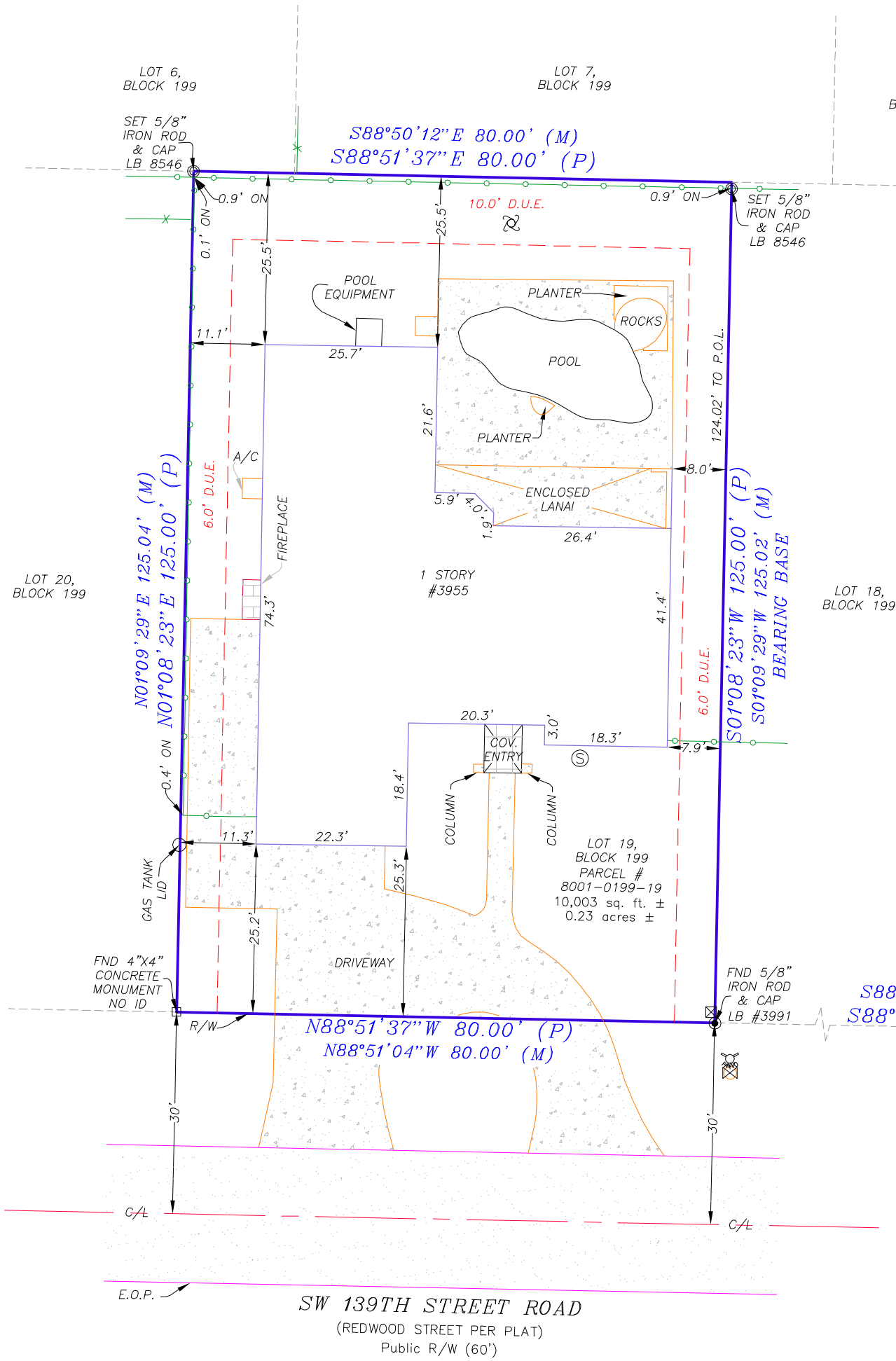


MAP OF BOUNDARY SURVEY

- LEGEND AND ABBREVIATIONS**
- A/C = AIR CONDITIONER
 - ANC. = ANCHOR WIRE
 - B/P = BRICK PAVER
 - (C) = CALCULATED DISTANCE OR BEARING
 - C/L = CENTERLINE
 - C.M.E.S. = CONCRETE MITERED END STRUCTURE
 - C.M.P. = CORRUGATED METAL PIPE
 - C.N.A. = CORNER NOT ACCESSIBLE
 - COL. = COLUMN
 - CONC. = CONCRETE
 - C.P.P. = CORRUGATED PLASTIC PIPE
 - (D) = DEED DISTANCE OR BEARING
 - D.E. = DRAINAGE EASEMENT
 - D.U.E. = DRAINAGE & UTILITY EASEMENT
 - E.M. = ELECTRIC METER
 - E.O.P. = EDGE OF PAVEMENT
 - FND = FOUND
 - ID = IDENTIFICATION
 - ILLEG. = ILLEGIBLE
 - IRR. = IRRIGATION
 - L.B. = LICENSED BUSINESS
 - L.S. = LICENSED SURVEYOR
 - (M) = MEASURED DISTANCE OR BEARING
 - (OR ANY COMBINATION)
 - OFF = OFF SUBJECT PARCEL
 - O/L = ON-LINE
 - ON = ON SUBJECT PARCEL
 - O.R.B. = OFFICIAL RECORDS BOOK
 - (P) = PLAT DISTANCE OR BEARING
 - P.B. = PLAT BOOK
 - P.C. = POINT OF CURVATURE
 - P.C.C. = POINT OF COMPOUND CURVATURE
 - P.E. = POOL EQUIPMENT
 - PG. = PAGE
 - P.I. = POINT OF INTERSECTION
 - PL. = PLANTER
 - P.O.B. = POINT OF BEGINNING
 - P.O.C. = POINT OF COMMENCEMENT
 - P.O.L. = POINT ON LINE
 - P.T. = POINT OF TANGENCY
 - P.R.C. = POINT OF REVERSE CURVATURE
 - PROP. = PROPOSED
 - P.S.M. = PROFESSIONAL SURVEYOR & MAPPER
 - R = RADIUS
 - R/W = RIGHT-OF-WAY
 - S.T. = SEPTIC TANK
 - TYP. = TYPICAL
 - U.E. = UTILITY EASEMENT
 - △ = CALCULATED POINT
 - = LINE NOT DRAWN TO SCALE
 - ⊗ = FIRE HYDRANT
 - ⊙ = SEWER CLEANOUT
 - ⊗ = WATER VALVE
 - ⊗ = POWER POLE
 - ⊗ = LIGHT POLE
 - ⊗ = CATV RISER
 - ⊗ = PHONE RISER
 - ⊗ = WATER METER
 - ⊗ = ELECTRIC BOX
 - ⊗ = 4" WELL
 - [Pattern] = ASPHALT
 - [Pattern] = CONCRETE
 - [Pattern] = TILE
 - x—x— = CHAIN LINK FENCE
 - H—H— = OVERHEAD WIRE
 - = WOOD FENCE
 - = PLASTIC FENCE
 - — — — = EASEMENT LINE
 - — — — = CENTERLINE
 - — — — = WIRE FENCE



PRINTING ELECTRONICALLY SIGNED DOCUMENT:
IN ORDER FOR THIS DOCUMENT TO BE VIEWED CORRECTLY IT MUST BE PRINTED ON AN 11"x17" (LEDGER) SIZE PAPER AND WITH NO SCALING, FITTING TO PAGE, OR CUSTOM SIZE OPTIONS. PRINTING THIS SHEET NOT TO SCALE IS ONLY FOR VISUAL AID PURPOSES. THE SIGNING SURVEYOR TAKES NO LIABILITY IN INFORMATION OBTAINED FROM ITS USE IN SUCH A MANNER.

THE SEAL AND SIGNATURE APPEARING ON THIS DOCUMENT WAS AUTHORIZED BY EUGENE HART FL LS#2232.

REVISIONS:

SCALE: 1" = 20'	FIELD DATE: 10/09/23	DWG NO: 23-245	PARTY CHIEF: TCM	DRAWN BY: ARS
-----------------	----------------------	----------------	------------------	---------------

CERTIFIED TO:
UNITED STATES OF AMERICA

SURVEY DATA SOLUTIONS, LLC.
P.O. BOX 1148 ALTOONA, FL., 32702
PHONE (352) 816-4084 LB 8546
CONTACT.SDS.US@GMAIL.COM

EUGENE F. HART
SURVEYOR'S CERTIFICATE
I HEREBY CERTIFY THAT THIS SURVEY WAS MADE UNDER MY RESPONSIBLE DIRECTION AND SUPERVISION AND THE PLAT AND DESCRIPTION DEPICTED HEREON IS A CORRECT REPRESENTATION OF THE LANDS SURVEYED. FURTHERMORE THIS PLAT AND DESCRIPTION MEETS THE ESTABLISHED STANDARDS OF PRACTICE SET FORTH BY THE FLORIDA BOARD OF PROFESSIONAL LAND SURVEYORS IN CHAPTER 5J-17.050-052, FLORIDA ADMINISTRATIVE CODE, PURSUANT SECTION 472.027, FLORIDA STATUTES.

Signature: *Eugene F. Hart* DATE: 10-9-23 Florida Registration No. 2232